



215, Rectangle One, Behind Hotel Sheraton, District Centre Saket, New Delhi-110017, India
Contact : Tel:+91-11-40611111, Fax : +91-11-40611110
Email : marketing@rahejabuilders.com

Website : www.raheja.com • www.rahejabuilders.com • www.rahejarevanta.com

A thing of beauty is joy forever



Beauty is the gift from god

Beauty is forever

*Beauty is in
eyes of the b
cholder*

*Beautiful
things are forever*

Beauty is power

Beauty is the gift from god



BEAUTY IS FOREVER

THE PYRAMIDS IN EGYPT

THE TAJMAHAL IN INDIA

THE COLLOSEUM IN ROME

EACH ONE A SYMBOL FOR A UNIQUE HUMAN EMOTION

EACH ONE WITH THE SAME AIM

OF PUSHING THE ENVELOPE OF IMAGINATION

OF CONQUERING THE PINNACLE OF PERFECTION

OF BEING OUTSTANDING AMONGST THE BEST

OF REACHING THE TOP OF THE WORLD



TATA RAHEJA RAISINA



RAHEJA OMA



RAHEJA ATLANTIS



DELHI PROJECT

FROM
THE BEST DEVELOPER WORLDWIDE*
INDIA'S BEST DEVELOPER 2011**
INDIA'S MOST AWARDED DEVELOPER***



*** Raheja Developers is the recipient
of 41 prestigious national
and international awards
in less than 2 years



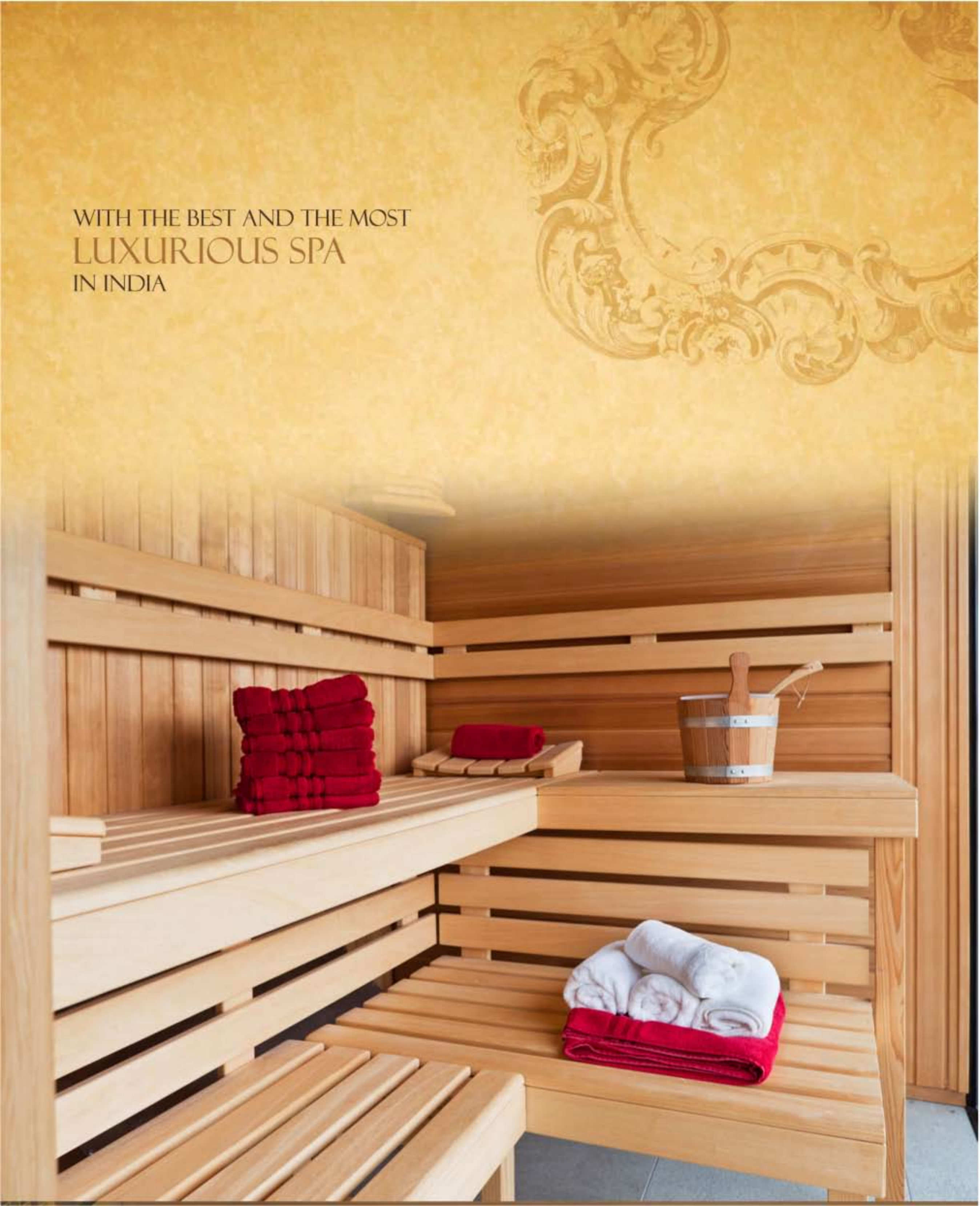
WITH THE CONSTRUCTION
COMPANY THAT BUILT THE
TALLEST BUILDING
IN THE WORLD,
BURJ KHALIFA



Towering over 828 m and more than 160
storeys, world's tallest building.

- > Highest occupied floor
- > Highest outdoor observation deck in the world
- > Superlative in concept and execution
- > A world class destination

WITH THE BEST AND THE MOST
LUXURIOUS SPA
IN INDIA



COMES ONE OF THE
TALLEST
SKYSCRAPERS
IN INDIA

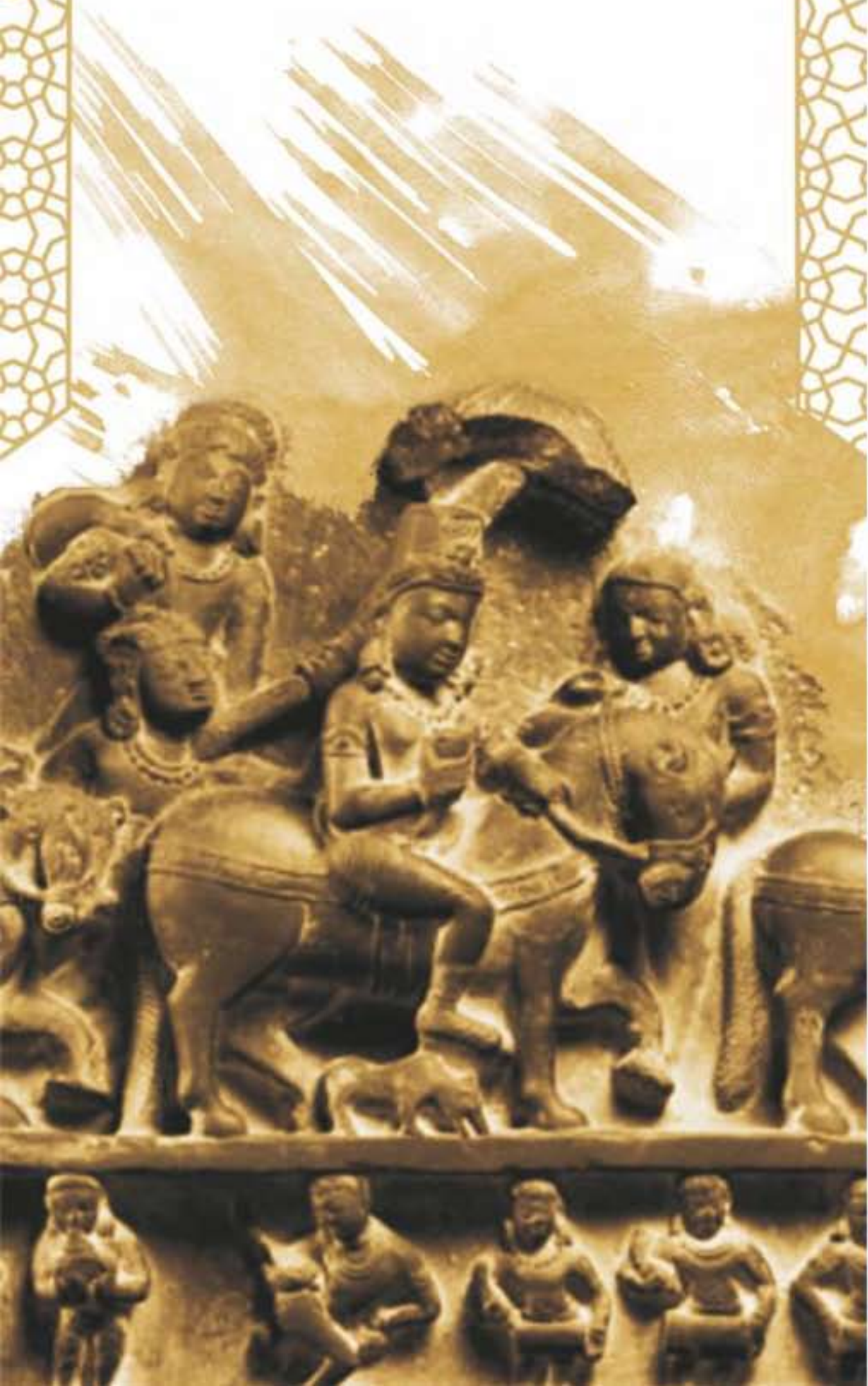


AND WITH THE
LARGEST & HIGHEST
SKYBRIDGE
OVERLOOKING THE ARAVALLIS





CITY
OF
GODS



WELCOME HOME TO


REVANTA
By RAHEJA

REVANTA AS DEFINED IN THE RIG VEDA,
IS THE YOUNGEST SON BORN TO SURYA GOD
AND HIS WIFE SARANYA,
THE DIVINE MASTER OF HORSES
THE GUARDIAN OF FORESTS
THE DEITY OF WARRIORS.



GALLOPING WITH THE FERVOR
OF A DIVINE HORSE FROM THE
CELESTIAL KINGDOM OF THE SUN GOD,
REVANTA BRINGS TO YOU
A HEAVENLY ABODE.



WITH THE POWER OF THE LORDS,
THE ELOQUENCE OF DEITIES,
THE PASSION OF THE UNIVERSE IS BUILT
A SACRED PLACE THAT YOU CAN CALL HOME.



TOWERING ABOVE A CITY OF MORTALS
STANDING TALL & GLORIOUS
AMIDST DWELLINGS OF GODS
ARE REVANTA'S LUXURIOUS HOMES IN HEAVEN
WHERE STYLE MEETS WISDOM & INTELLIGENCE.

REVANTA
CITY OF GODS

WHERE THE EARTH BECOMES ONE WITH THE SKY, THE MOON AND THE STARS

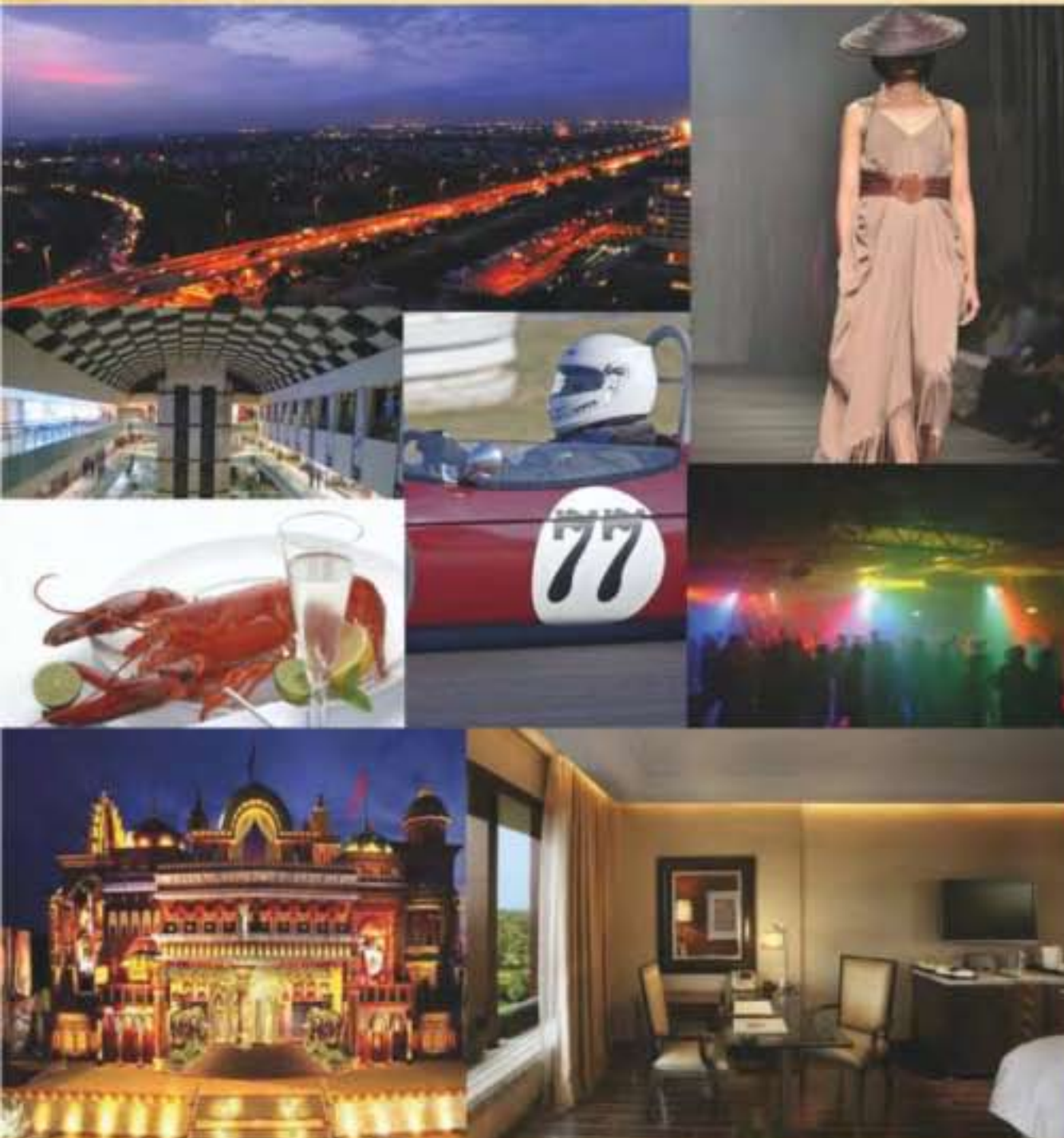
AN ADDRESS IN PARADISE CITY

Gurgaon has today become India's financial centre with young and tech savvy inhabitants. It has emerged as the lifestyle city for Arts, Entertainment, Business, Fashion, Shopping, Fine Dining, Nightlife and Hospitality.

A kingdom in heaven. A lifestyle fit for the vanguards of humanity. A high profile gated community built over 18.39 acres. That replenishes the well springs of life, creativity and evermore.

Towering high in Sec 78, Gurgaon. Located just off NH8 near the Intersection of Northern Periphery Road, Southern Periphery Road & NH8. In close vicinity of proposed Metro Line.

Surrounded by a host of planned 5 Star Hotels, Golf Courses, Shopping Malls, and Office Developments.



GURGAON

| Key Nodes | Distance (Approx) | Time* (Approx) |
|-------------------------------|-------------------|----------------|
| ITC CLASSIC GOLF RESORT | 3 KM | 5-7 MIN |
| MEDANTA MEDICITY | 12 KM | 10-15 MIN |
| RAHEJA ATLANTIS | 12 KM | 10-15 MIN |
| IGI AIRPORT, NEW DELHI | 22 KM | 20-25 MIN |
| VASANT VIHAR, NEW DELHI | 29 KM | 25-30MIN |
| DHAULA KUAN, NEW DELHI | 30 KM | 35-40 MIN |
| RASHTRAPATI BHAWAN, NEW DELHI | 37 KM | 50-55 MIN |

(*Depending on Traffic conditions)



ARAVALLIS

WHERE THE HEAVENS
BREAKTHROUGH THE VEIL

With the Aravallis smiling at you through your window every morning, this is a place for vigorous morning walks with peacocks & blue bulls for company, or for a pleasurable horse-ride.* The Aravallis, which are a kissing distance from Revanta, are often frequented by over 100 species of birds... The evenings promise to be equally enchanting.

(*To be outsourced by Association of Management Services)



RECREATION

WHERE NATURE MELTS IN JOY
WITH WHIFFS OF
NATURAL AROMAS
AND SECRET SPELLS



*Disclaimer: The Club, Sports, Recreational & other facilities like spa, sauna, steam bath, jacuzzi, yoga, tennis, gymnasium, basketball, aerobics, billiards, squash etc. are not part of the super area & are the property of the developer & shall be managed on the discretion of the developer. Amatra Spa (Owners Mayar Health Resorts Limited) have been nominated as operators to run the facilities as per terms and conditions.
All pictures are Artistic impression and reference images only.



RECREATION

WHERE YOU COULD
PERFECTLY BALANCE YOUR
MIND, BODY
AND SOUL



Dive into a world class swimming pool
Designed to challenge your stamina and rejuvenate your senses
This is where you socialize over champagne
And where your kids plunge into a separate kids pool

Tee off at the surrounding Golf Courses
Each at a distance of less than a few miles from Revanta
GOLDEN GREENS Golf Resort
TTC CLASSIC Golf Resort
KARMA Lakelands
Or invite your friends and business partners
to a peaceful morning game of 18 holes*



You choose the game.
And set the adrenaline pulsing high.

With tennis, squash, table tennis, basketball & billiards.
A kids play area so your children can have the best
memories of growing up.

Every imaginable sports facility in a world class setting.



CLUBHOUSE

The clubhouse at Revanta is the final word in luxurious wellness across India. Here, ancient Wisdom like Astroscience and Ayurveda meet the very latest in health and wellness technologies to create an experience that is inimitable.

With a World-Class Fitness Centre comprising of a Gymnasium, Jacuzzi, Sauna, Steam Bath and a full-service Spa, the clubhouse at Revanta will be the envy of all your friends staying in other gated communities!





AMENITIES

WHERE FORM & FUNCTION
COME TOGETHER IN A
SACRED MARRIAGE





RETAIL CENTRE



MINI THEATER



VALET PARKING

WHERE LIFESTYLE IS A STATEMENT OF YOUR FINE TASTE

An exquisitely crafted landscape awaits you.
With a full array of water features and lagoons.
To make you feel pampered in a resort-like atmosphere.
You may even set out on the journey of self discovery.

Why would you ever want to step out of this haven?
When every convenience is available only a stone's throw away.
A dedicated retail center for all your grocery needs.
And a business center for all your business needs.

For the first time in India.
We bring to you facilities never heard of before.
A laundromat for a quick wash of clothes.
A mini theater to watch your favorite movies on the big screen.
An automated car wash to get your car sparkling in moments.
And Valet parking (for the Surya Tower residents).



TAPAS TOWNHOUSES

Tapas in Sanskrit means the heat of spiritual ecstasy and represents our vision to gift you a lifestyle fit for Gods !

The Tapas Townhouses at Revanta have been crafted to let you indulge yourself in opulence, luxury and elegance.

Entering through a luxurious double height lobby, you can notice an elevator as a standard in all the Tapas Townhouses to take you to the floor of your choice.

The Tapas Townhouses - ethereal decor, intricate detailing, imbued with the allure of modern and classical art. Inspired by Raheja's iconic philosophy. Every day spent here is a celebration !

Available in 3, 4 BHK and Penthouse options with attached terraces.





'Surya' in Sanskrit means the Sun.
It's a marvel of sophisticated technology.
And truly an achievement of modern day engineering.

With a luxurious double height entrance lobby.
With high speed panoramic glass elevators.
With a neo classical aura.
With bourgeois architecture and a clean glass facade.
With a never before imagined lifestyle.
Surya tower is iconic, suave and inspiring.

Available in options of Studio, 2, 3, 4, 5, 6 BHK Condos & Luxurious Penthouses.



WHERE AN
INFINITY POOL
OPENS TO THE SKIES

A comfortable oasis of relaxation and social intimacy that allows you to immerse in a sea of calm, cleanse your mind and rejuvenate your soul. Enjoy the fine dining restaurant at the Skybridge while enjoying breathtaking views of the Aravallis. Or you may choose to indulge in group activity classes for power Yoga, Meditation etc.



WHERE YOU CAN ENJOY AND EXPLORE THE NEVER ENDING MOMENTS OF JOY AND BLISS

Unique styles and decorative details distinguish the Premium Residences at Revanta. From luxurious tiled floors to engineered wooden floors, from branded sanitaryware and fittings to split airconditioning, we have incorporated a variety of fixtures and finishes in various floor plan options for everyone to find their dream luxury home here.



Disclaimer: The images shown above are only for illustrative purpose.



WHERE YOU STEP INTO A LIFESTYLE OF REFINED EASE

At Revanta Residences, homes will come with imported modular kitchen with granite counter tops and all the gear necessary to cook up a great family meal. From glass railings in balconies to intricate jalis and plastic emulsion painted walls in the living room, each home is blended with function and beauty, offering ease and comfort to its residents.



LIVING ROOM

Disclaimer : The images shown above are only for illustrative purpose.

WHERE WELLNESS MEETS BEAUTY

For the first time in India, Raheja brings to you branded lifestyle homes. Only for the ultra sophisticated few, these are uber residences with special specifications & lifestyle privileges above the rest.

Wellness is the underlying theme in every facet of Premium Homes. Elevate yourself to a superior lifestyle with an exclusive selection of imported marble flooring, wooden flooring, premium tiles, glass railings, concealed ducted airconditioning, branded sanitaryware, fittings & fixtures, high quality imported modular kitchen, home automation, false ceiling and wardrobes.

Premium Home owners will also be pampered with on call private masseur, private yoga instructors, treatment specialists as well as lifestyle & wellness experts to guide you on how to attain complete wellness in body, mind and soul. From pure aesthetics to functionality, You will experience a lifestyle that is surrounded by beauty in every little detail offering a new standard of style found nowhere else.



** By invitation only*



Disclaimer: The images shown above are only for illustrative purpose.

WHERE LUXURY & STYLE IS PACKAGED WITH INTELLIGENCE

We present to you Intelligent Homes. Homes that are so smart, you sometimes feel they are alive. Backed by Raheja's philosophy of innovation and high-tech engineering. Imagine homes with a mind and a personality. A home that thinks for you, so that you don't have to.

From restricted access to Premium floors, to a digital door lock with key less entry. From mood lighting to automatic curtains, and much much more...

Everything controlled from your phone or a tablet. It's a home, with a soul.

- Earthquake Resistant Structure • CCTV Surveillance at every stage • 24X7 Power backup
- Advanced Firefighting / Firealarm / Smoke detection systems installed in the towers
- Complete 3 tier security



LIVING ROOM

Disclaimer : The images shown above are only for illustrative purpose.

WHERE EVERY APARTMENT IS DESIGNED TO USE ENERGY & RESOURCES EFFICIENTLY

As the effects of climate change are felt across the world, we feel the task of building eco friendly houses as the need of the hour. Built under the guidance of the Indian Green Building Council (Membership No. IGBC - CS - 1641, Project Pre-Certification No. GH-111174), every apartment at Revanta is a 'Green Home'. The concept uses energy and resources efficiently, thereby creating a healthier environment that is sensitive to air quality, lighting, acoustics and aesthetics.

We are committed to follow highest environmental practices on Water & Energy Conservation as well as labour safety and welfare practices because a clean, green & sustainable environment created by a passionate team builds a better tomorrow for our future generations.





REVANTA

By RAHEJA



Convenient Shopping

Aravallis

Club

Sports

Restaurant

Infinity Pool



Block 5 - 9

Block 1 - 4

TAPAS
TOWNHOUSES

Block 10 - 18

Block 19 - 27



FLOOR PLANS

SIZES & DESIGNS TO SUIT ALL
LIFESTYLES





**SURYA
TOWER**

1 BHK

Saleable area 1197.83 sqft.

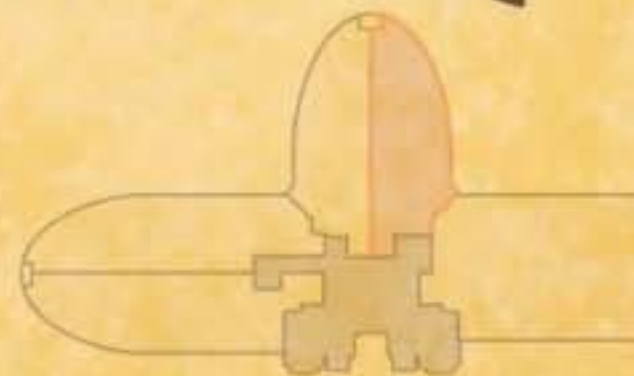


1 BHK
TOWER A,C
FLOORS - 26TH TO 34TH

TOWER B
FLOORS - 36TH TO 44TH

2 BHK - I

Saleable area 1621.39 sqft.



2 BHK - I
TOWER A,C
FLOORS - GR TO 24TH

TOWER - B
FLOORS - GR TO 24TH & 26TH TO 34TH

2 BHK II

Saleable area 1714.67 sqft.

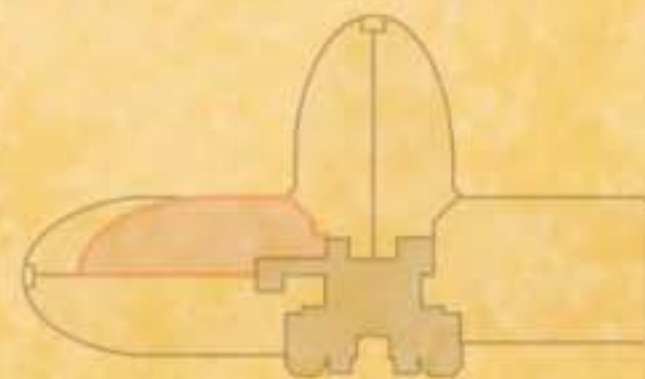


2 BHK - II
TOWER A,C
FLOORS - 16TH TO 24TH

Disclaimer: In the interest of maintaining high standards, floor plans, layout plans, areas, dimensions and specifications may change as decided by the company or by any competent authority.

2 BHK III

Saleable area 1854 sqft.



2 BHK - III
TOWER A,C
FLOORS - 16TH TO 24TH

Disclaimer: In the interest of maintaining high standards, floor plans, layout plans, areas, dimensions and specifications may change as decided by the company or by any competent authority.

2 BHK IV

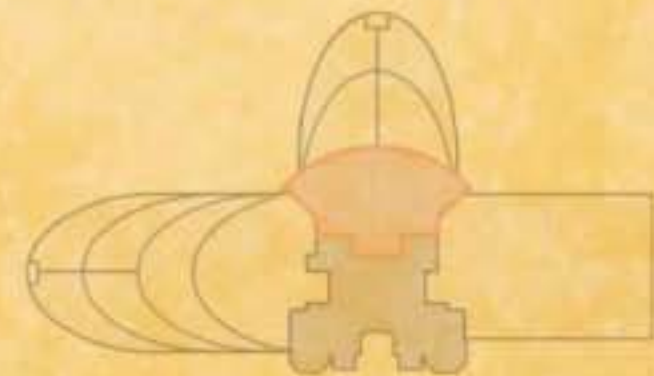
Saleable area 1623.33 sqft.



2 BHK - IV
TOWER A,C
FLOORS - 36TH TO 44TH

2 BHK V

Saleable area 1478.84 sqft.



2 BHK - V
TOWER A,C
FLOORS - 36TH TO 44TH

3 BHK I

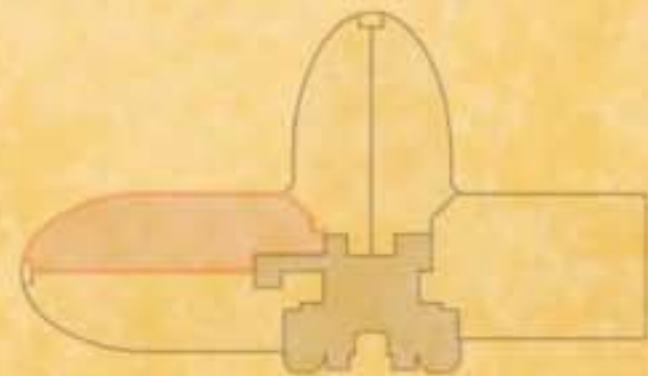
Saleable area 2165.85 sqft.



3 BHK - I
TOWER A,C
FLOORS - 1ST TO 15TH

3 BHK II

Saleable area 2304.22 sqft.



3 BHK - II
TOWER A,C
FLOORS - 1ST TO 15TH

3 BHK III

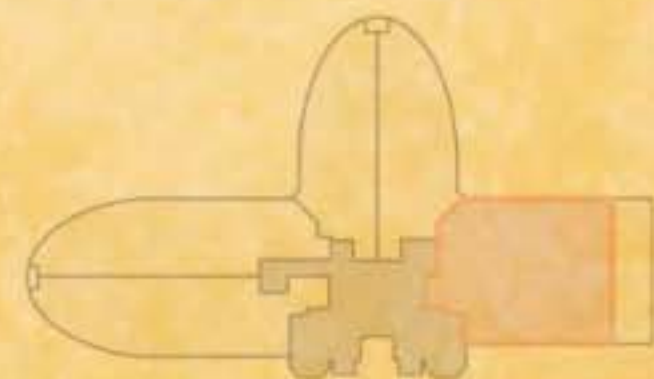
Saleable area 2522.86 sqft.



3 BHK - III
TOWER A,C
FLOORS - 26TH TO 34TH

3 BHK IV

Saleable area 2813.31 sqft.



3 BHK - IV
TOWER A,C
FLOORS - 8TH TO 12TH & 28TH TO 32ND
TOWER B
FLOORS - 8TH TO 12TH TO 32ND & 40TH TO 44TH

3 BHK V

Saleable area 2457.22 sqft.



3 BHK - V
TOWER A,C
FLOORS - 40TH TO 44TH

Disclaimer: In the interest of maintaining high standards, floor plans, layout plans, areas, dimensions and specifications may change as decided by the company or by any competent authority.

4 BHK

Saleable area 3434.38 sqft.



4 BHK
TOWER A,B,C
FLOORS - GR TO 7TH & 13TH TO 24TH,
26TH, 27TH, 33TH, 34TH & 36TH TO 39TH

Disclaimer: In the interest of maintaining high standards, floor plans, layout plans, areas, dimensions and specifications may change as decided by the company or by any competent authority.

5 BHK (WITH LAWN)
 Saleable area 4293.71 sqft.



5 BHK
 TOWER A,C
 GROUND FLOORS

Disclaimer: In the interest of maintaining high standards, floor plans, layout plans, areas, dimensions and specifications may change as decided by the company or by any competent authority.

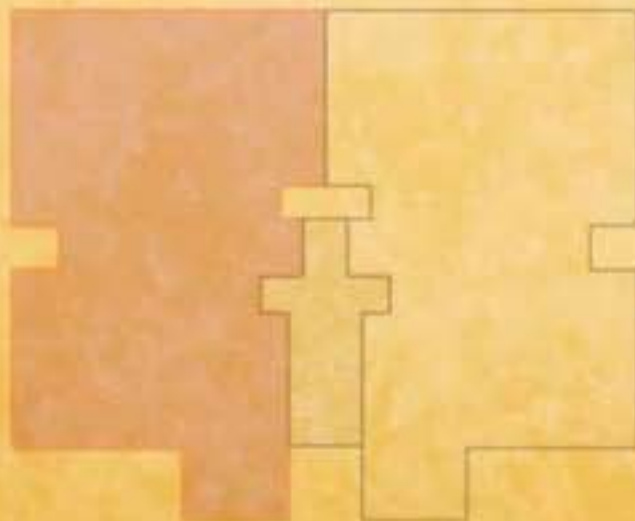
6 BHK
 Saleable area 4960.98 sqft.



PRESIDENTIAL SUITE - 6 BHK
 TOWER B
 FLOORS - 47TH TO 55TH

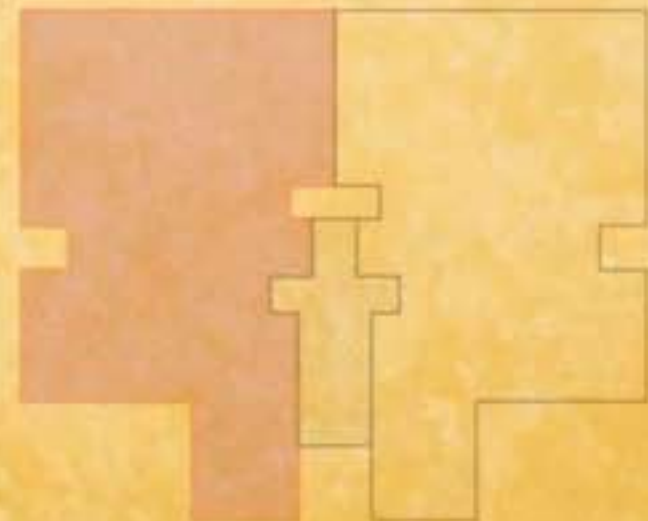
Disclaimer: In the interest of maintaining high standards, floor plans, layout plans, areas, dimensions and specifications may change as decided by the company or by any competent authority.

SECOND FLOOR
2073.6 sq.ft



Disclaimer: In the interest of maintaining high standards, floor plans, layout plans, areas, dimensions and specifications may change as decided by the company or by any competent authority.

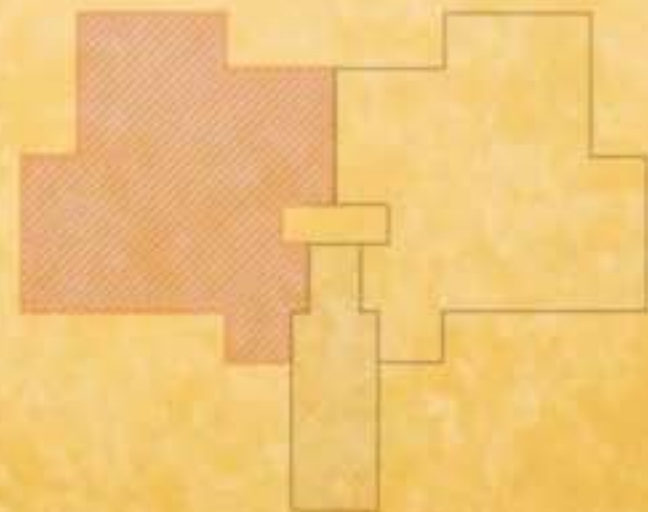
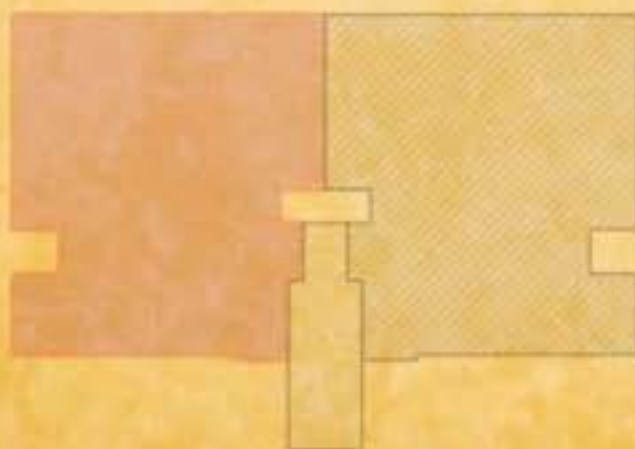
LOWER PENTHOUSE
3141.8 sq.ft



Disclaimer: In the interest of maintaining high standards, floor plans, layout plans, areas, dimensions and specifications may change as decided by the company or by any competent authority.

UPPER PENTHOUSE

MUMTY FLOOR



Emirates Palace, Dubai



Jumeirah Beach Residence, Dubai



Okhta Tower, Russia



Burj Al Arab, Dubai (Interiors)



ASSOCIATES



Arabtec Construction LLC, a subsidiary of Arabtec Holding PJSC, is the leading contractor in the UAE and the largest by market value, with a current workforce of more than 40,000 people and a backlog of approximately \$4 Billion. It is currently working on 44 projects in 11 countries. It is one of the top five contractors in the GCC. Since inception in 1975, it has successfully executed a huge array of major projects including but not limited to: High Rise Developments, Hotels and Hotel Interiors, Commercial Developments, Industrial Projects, Airport Developments, Stadiums, Infrastructure, Sewerage and Drainage works, Offshore Oil and Gas Installations and Residential Complexes. Recently Arabtec was also awarded the construction of 5,000 villas and accommodating infrastructure in KSA and the Colleges of Education and Arts in Kuwait University.

Some of Arabtec's well known projects are The Burj Khalifa, the world's tallest tower (at 828m), the Address Hotel and Emirates Palace Hotel in Abu Dhabi. Internationally, amongst others, Arabtec is building Al Waab City, World Trade Center (WTC) and Twin Towers in Doha, Qatar, Okhta Tower in St. Petersburg, Russia, the 8th Gate and Al-Yasmeen Rotana Hotel in Damascus, Syria, a significant part of the Princess Nora University in Riyadh, KSA and the Hanging Gardens and Marussi Projects in Egypt.

Arabtec Construction LLC is wholly owned by Arabtec Holding PJSC, which became publicly listed in 2004 and is traded under the symbol "ARTC" on the Dubai Financial Market. Today Arabtec Holding has 19 subsidiaries providing end-to-end contracting services across the entire construction value chain, and is the largest contracting conglomerate in the UAE.



 INDIA'S
PREMIUM
BRAND

WE ARE ICONIC BECAUSE
WE CHOOSE TO BE
DIFFERENT





WHERE EXCELLENCE IS A HABIT NATIONALLY & GLOBALLY

RAHEJA DEVELOPERS is today large enough to be counted amongst the foremost real estate companies in India, but in essence, it is small enough to address each customer's personalized needs and expectations. Built on a legacy of over 22 years of honored commitments, integrity, innovation and timely delivery of Quality Projects, RAHEJA is a name that today exudes TRUST. We don't just build Homes / Offices / Malls / SEZs with brick and mortar, but also with feelings and emotions, because we know that the space we create is not merely a House for you, but a HOME purchased with your hard earned money!!

That is the reason why all our projects are always constructed on time with specifications and construction quality as per commitment. The projects under the new Gurgaon Masterplan are no different and have successfully carried forward this legacy of trust & transparency. RAHEJA invites you to be a part of their huge FAMILY of Happy Clientele!!

RAHEJA DEVELOPERS has been recognized on several International and National platforms and conferred with prestigious awards such as CNBC AWAAZ-CRISIL Real Estate Awards, Cityscape Asia Awards, Asia Pacific Bloomberg Google Property Awards, OPP (London) Excellence Awards, Zee Business RICS Award and the Golden Peacock Award for Innovation Management. Raheja was also recently awarded the internationally acclaimed Euromoney award for the Best Developer in India & the OPP Award for the Best Developer Worldwide.



Disclaimer: The Club, Sports, Recreational & other facilities like spa, sauna, steam bath, jacuzzi, yoga, tennis, gymnasium, basketball, aerobics, billiards, squash etc. are not part of the super area & are the property of the developer & shall be managed on the discretion of the developer. Amatera Spa (Owners Mayar Health Resorts Limited) have been nominated as operators to run the facilities as per terms and conditions. All pictures are Artistic impression and reference images only.

• No. & Date of License : 49/2011 dt 01.06.2011 • Type of colony & its areas : Residential Group Housing, 18.72 Acres • Name of the Colonizer : M/s Raheja Developers Ltd.
• No. & Date of the approved Building Plans : 13734 dt. 16.9.2011 • Max. No. of Flats : 1225 Units • All the approvals can be checked in the office of Raheja Developers Ltd.*

*As on date

SOCIAL WELFARE

We realise that our buildings are built with the sweat and toil of labor who work day and night to ensure the timely delivery of the projects. As a mark of appreciation for their contribution, we are providing the children of the labor with Day Care Centres at all our sites where they are provided with nutritious food, basic education and medical facilities free of cost.



SCHOOL AT SITE



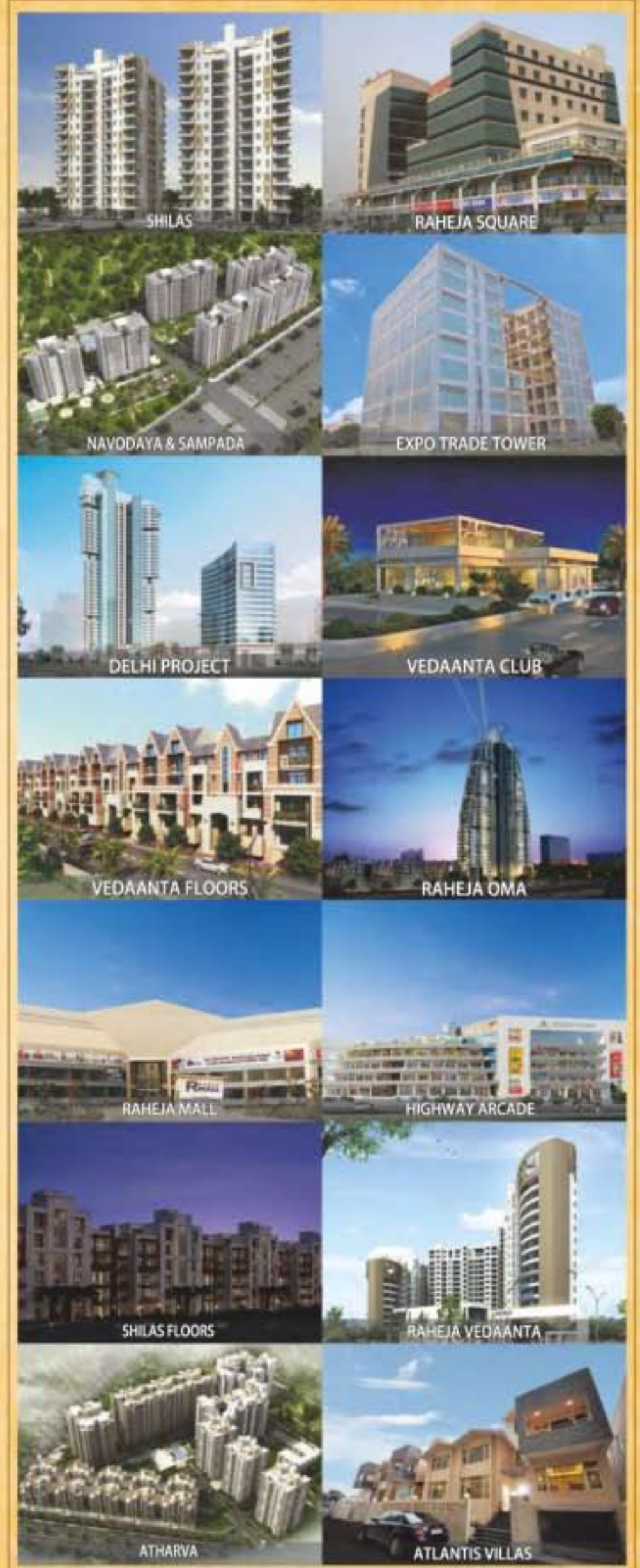
FREE NUTRITION, MEDICATION



FREE EDUCATION FOR LABOR'S CHILDREN

TRANSPARENCY

OUR PROJECTS



At Raheja, we pride ourselves in always implementing new and innovative processes to keep you updated about your property. Join us on Facebook, Youtube or our continuously updated Website to watch the latest construction update videos, virtual tours, new product offerings and newsfeeds from anywhere in the world or while on the move. We also take pride in being one of the few real estate companies to run on specially developed ERP softwares which provides accountability and transparency in processes. What it means for you is that you can be always aware of the present construction status of your property, your account statements and the latest updates at the touch of a button while you relax at home.

Join us on :



www.facebook.com/RahejaDevelopers



www.youtube.com/user/rahejamedia